

DS078 Terminal Emulation

Efficient Maintenance – A Permanent Challenge

Conservation of value and protection of investment

Only a long service life for a process automation system ensures high profitability. Process computers and operator stations on the process control level not only age faster than boilers, furnaces and machines, but neither can they keep up with the lifetime of the plant automation equipment.

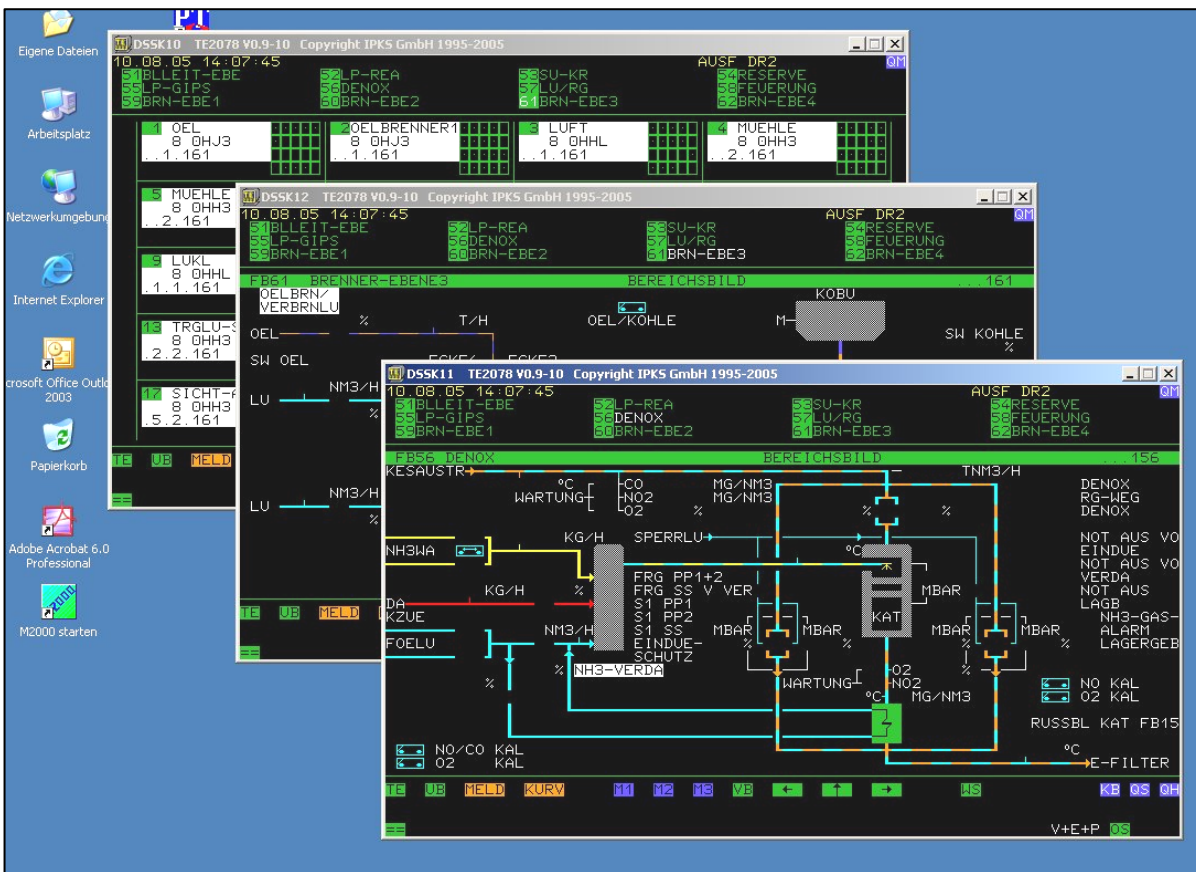
Moreover, maintenance costs shoot up, and obtaining spare parts for the workstation hardware becomes increasingly difficult as many proprietary systems are discontinued by the manufacturer.

Conclusion: The DS078 workstations of the process control level are due for modernization.

Our solution: The TE2078 terminal emulation

The TE2078 terminal emulation developed by IPKS replaces the DS078 workstations of the TELEPERM process control level. The terminal emulation runs on standard computers based on Windows operating systems.

The TE2078 terminal emulation communicates with the original OS system over a serial connection, or with an OS265 system running under the M2000 emulator over the local area network (LAN).



And what are the benefits?

- ✓ Plug-compatible replacement of the out-of-date and discontinued original equipment without risks
- ✓ Use of commercial off-the-shelf technology (Windows computers, Windows XP operating system, TFT monitors).
- ✓ Reduced maintenance and modification costs
- ✓ Easy-to-use, familiar user interface (now with mouse device instead of a light pen)
- ✓ Additional functions such as multi-screen operation, window mode, full-screen mode, visualization over the Intranet

With the use of standard technology you directly benefit from new developments in information technology. Individual components and functions can be replaced and expanded at any time within the life cycle - always with the best technology that is available today.

DS078 Terminal Emulation

Technical Highlights

TE2078 terminal emulation

The TE2078 terminal emulation software emulates the function scope of the Siemens DS078 visual display unit. TE2078 is a 32-bit window application based on the following operating systems:

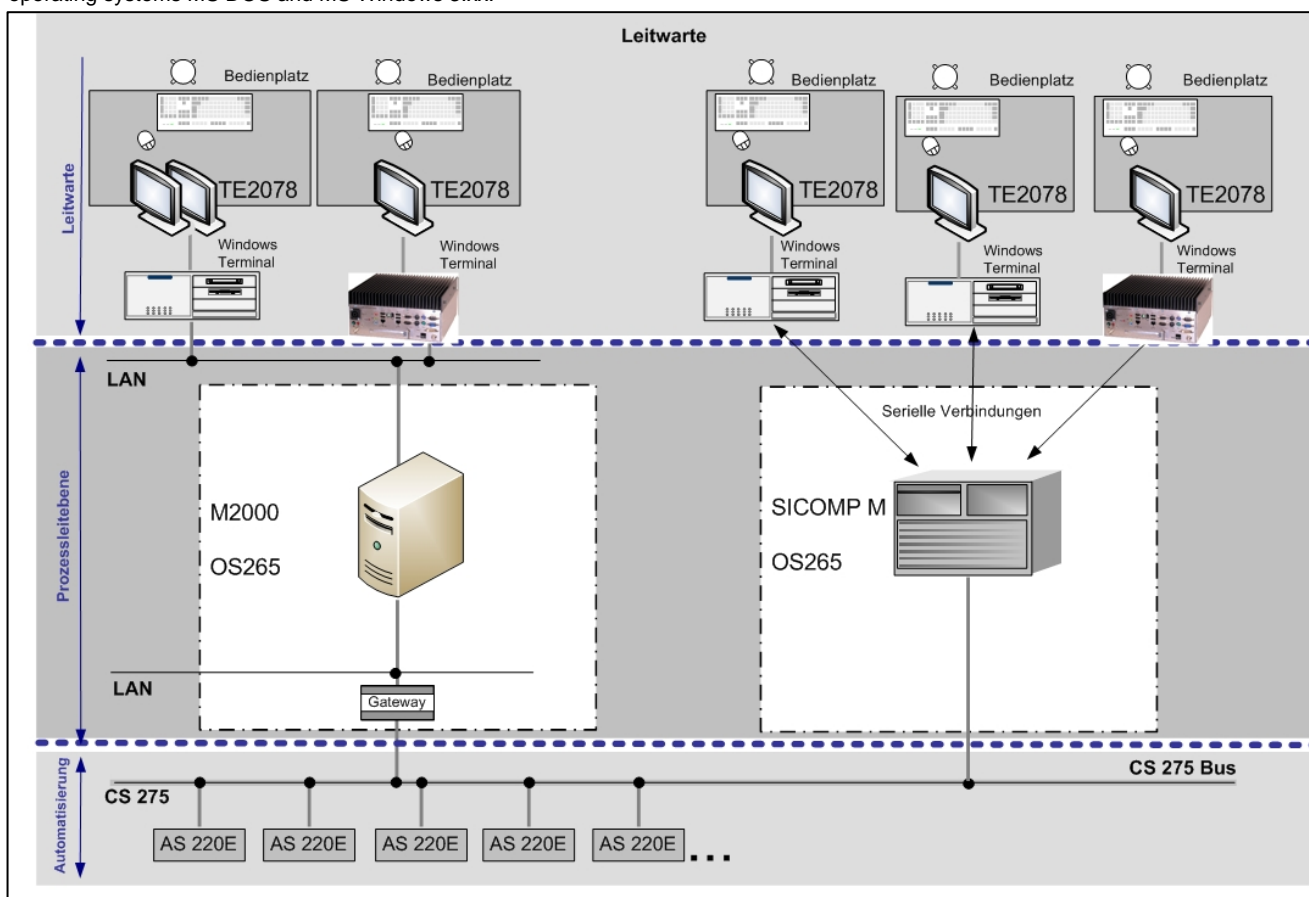
- **Windows 2000**
- **Windows 2003 Server**
- **Windows XP**

The TE2078 terminal emulation software cannot be used with the operating systems MS DOS and MS Windows 3.xx.

Operating modes

Flexible adaptation to different operating conditions is a characteristic feature of our TE2078 terminal emulation software:

- Window mode or full-screen mode
- Visualization over the Intranet (WEB server)
- Plug-compatible connection via serial lines
- Connection via LAN (with M2000 only)
- Local window operation (Windows) on the M2000 console (with M2000 only)



Additional functions

In addition to the function scope of the original DS078 visual display unit, the TE2078 terminal emulation offers functions such as:

- Multi-screen operation
- Full-screen or window mode
- Exclusive mode
- Definition of keyboard functions
- Password protected parameter definition
- 15 foreground and 14 background colors
- Color adjustment by means of slide controls
- Cursor shape and color can be changed
- Variable sound management

Application

- One-to-one replacement of a DS078 workstation. Connection via the existing serial line implementing a stand-alone unit in window mode or full-screen mode. The terminal is installed by changing the serial connection.
- Migration of the OS265 system to Windows 2003. Connection to the Windows system over the LAN. It is possible to run several terminal emulations on a single Windows computer in order to allow multi-window and multi-screen operation (e.g., one workstation with two monitors).

For further information, please contact our branch in Erlangen. We will be pleased to help you with the commissioning of your system and can offer you a fixed price hotline service. Please don't hesitate to contact us if you have any queries!