

TELEPERM M / ME – Printer Replacement Function

Your Entrance to Standard Solutions

Conservation of value and protection of investment

Only a long service life for a process automation system ensures high profitability. Process computers and operator stations on the process control level not only age faster than boilers, furnaces and machines, but neither can they keep up with the lifetime of the plant automation equipment. Up to date functionality plus a new conception for the ergonomics of the user interface and the data exchange with other systems will need a improved efficiency of the process control level, before a modernisation of the automation level is required.

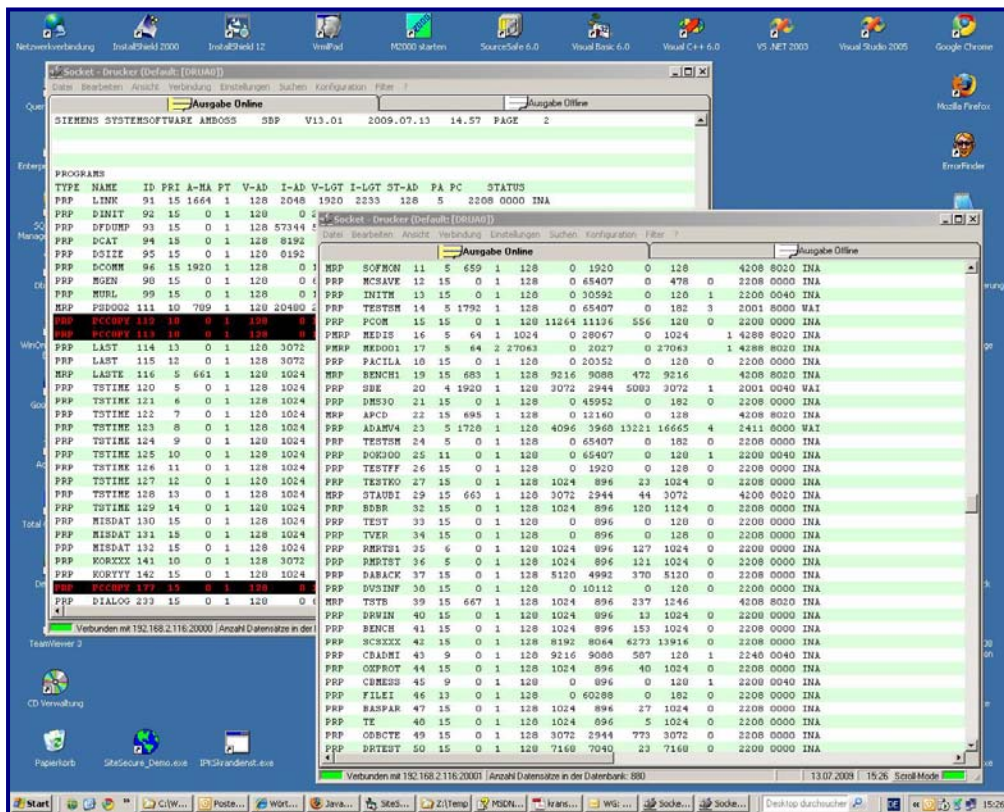
Conclusion: The process control level is due for modernization, but without engagement into the existing automation level.

Our solution: Printer Replacement Function

With our Printer Replacement solution we open the process control level for output data on serial printers.

Print output data from the systems of the process control level (OS / IS) will be collected and archived in a central data base on "virtual printers".

The printer data can be selected, visualised and processed on unlimited number of WINDOWS computers.



And what are the benefits?

- ✓ Risk free system opening mode
- ✓ Cost-efficient, stepwise modernisation
- ✓ Use of commercial off-the-shelf technology (process operating systems, trend indication, archival storage)
- ✓ Reduced maintenance and modification costs

With the use of standard technology you directly benefit from new developments in information technology. Individual components and functions can be replaced and expanded at any time within the life cycle - always with the best technology that is available today.

TELEPERM M / ME – Printer Replacement Function

Technical Highlights

The Printer Replacement Function

The components of the printer replacement function are:

- Windows service (SocketDruckServ)
- DataBase (MSDE)
- Interactive program (SocketDrucker)

Components are based on the following operating systems:

- Windows 2000
- Windows 2003 Server
- Windows XP, Vista

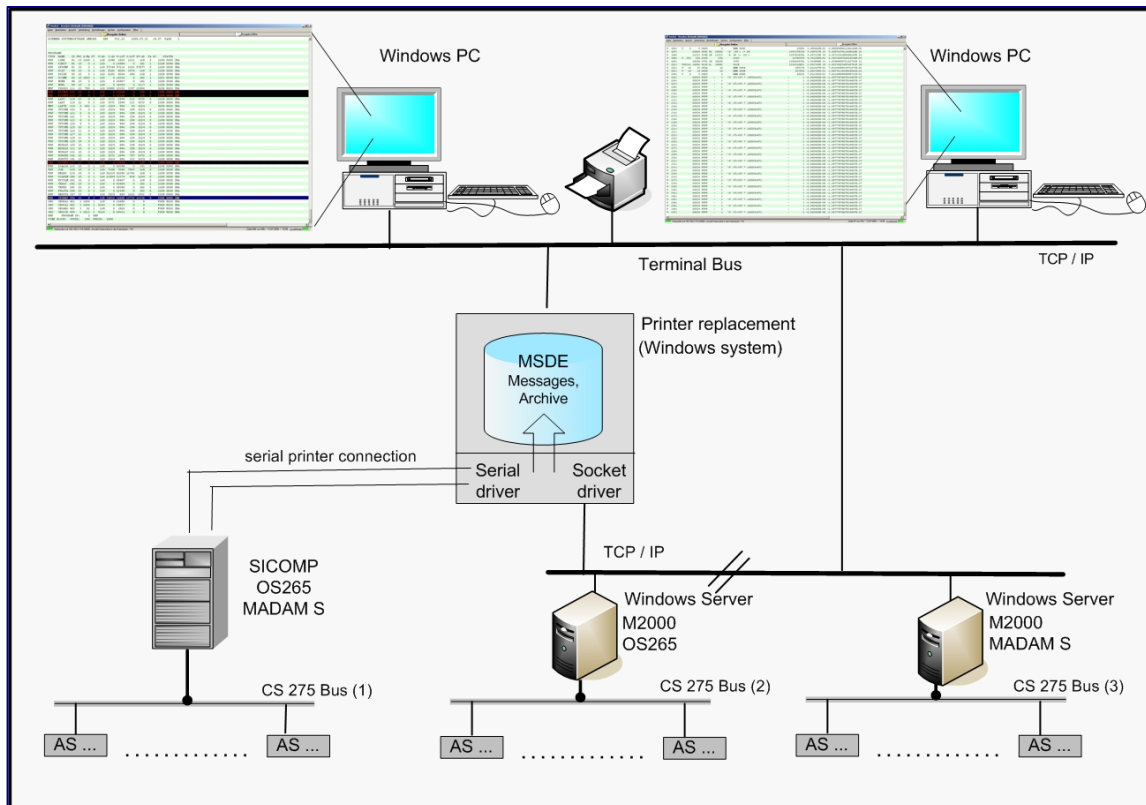
Operating modes

OnLine:

Data of the chosen virtual printer are streaming in to the WINDOWS PC, connected to the data terminal bus, exactly that way just as in a real printer. This mode can be chosen on different clients for one and the same printer.

OffLine:

Data of all virtual printers, collected in the MSDE data base, can be selected according to different criteria, visualised and printed on WINDOWS PC's, which are connected to the data terminal bus.



Additional functions

- Selections und full text search in printer text.
- Text (e.g. messages) can be recoloured automatically (parametrizable).
- On (during) the output of text, signals will be activated, e.g. soundfiles will be played as buzzer alternative / digital output (adjustable).
- Output of printer text on network printer, connected to the data terminal bus.
- The WINDOWS service SocketDruckServ has an open interface, which can be used for printer output from other WINDOWS programs.

Application

- One-to-one replacement of serial line printers on Siemens SICOMP computers (e.g. substitute OSPROT). Connection over existing serial lines to a serial Port Server (and TTY converter). Installation will be made by plug in the serial line to the port server.
- Enhanced print function for emulated Siemens SICOMP systems. The output of any printer, that is operating with the emulated operating system (ORG-M, ORG-PV, ORG-H, ORG-HV, and so on) can be redirected to the WINDOWS service (SocketDruckServ).

For further information, please contact our branch in Erlangen. We will be pleased to help you with the commissioning of your system and can offer you a fixed price hotline service. Please don't hesitate to contact us if you have any queries!