

VDU2000 Terminal Emulation (MADAM S)

Technical Highlights

TEVDU2000 terminal emulation

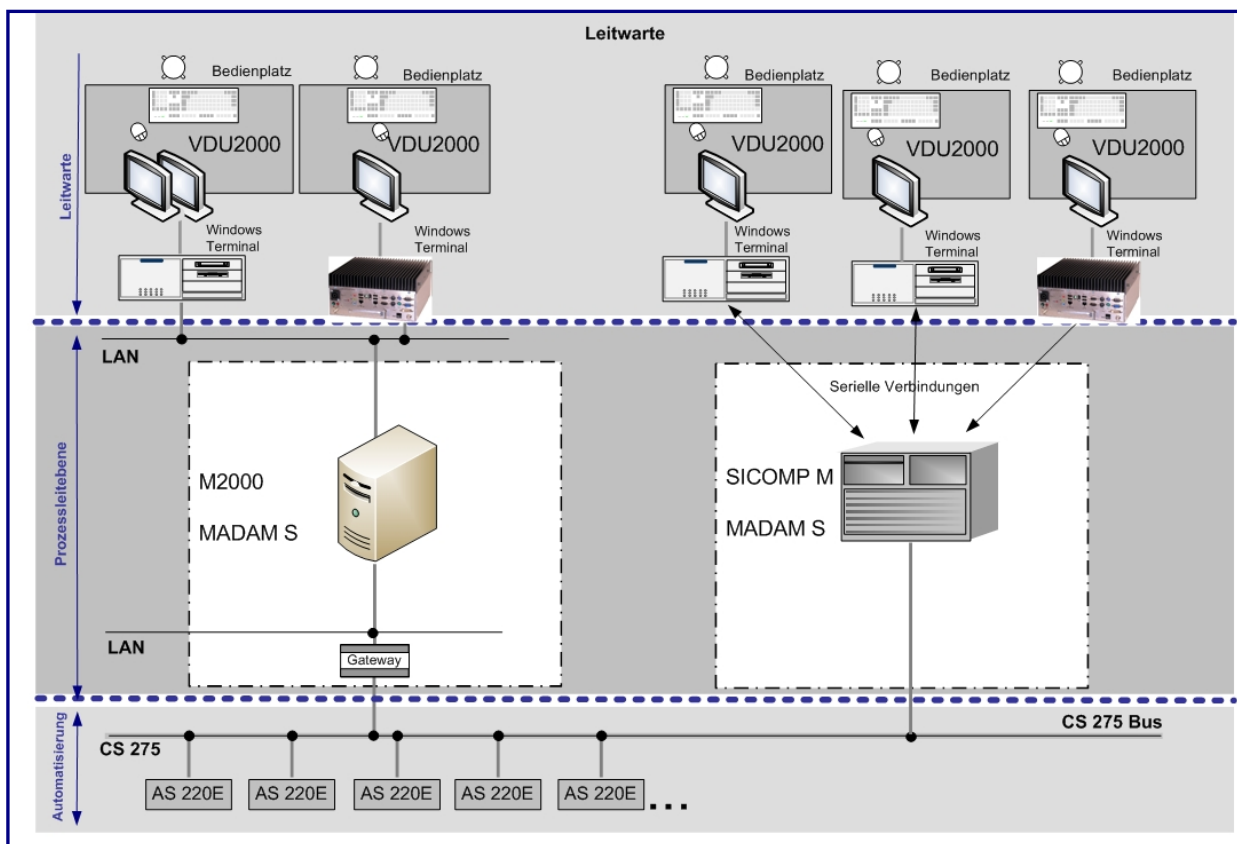
The TEVDU2000 terminal emulation software emulates the function scope of the Siemens VDU2000 visual display unit.
TEVDU2000 is a 32-bit window application based on the following operating systems:

- Windows 2000
- Windows 2003 Server
- Windows XP

Operating modes

Flexible adaptation to different operating conditions is a characteristic feature of our TEVDU2000 terminal emulation software:

- Window mode or full-screen mode
- Visualization over the Intranet (WEB server)
- Plug-compatible connection via serial lines
- Connection via LAN (with M2000 only)
- Local window operation (Windows) on the M2000 console (with M2000 only)



Additional functions

In addition to the function scope of the original VDU2000 visual display unit, the TEVDU2000 terminal emulation offers functions such as:

- Multi-screen operation
- Full-screen or window mode
- Exclusive mode
- Password protected parameter definition

Emulation of the function keyboard.

Application

- One-to-one replacement of a VDU2000 workstation. Connection via the existing serial line implementing a stand-alone unit in window mode or full-screen mode. The terminal is installed by changing the serial connection.
- Migration of the MADAM S system to Windows 2003. Connection to the Windows system over the LAN. It is possible to run several terminal emulations on a single Windows computer in order to allow multi-window and multi-screen operation (e.g., one workstation with two monitors).

For further information, please contact our branch in Erlangen. We will be pleased to help you with the commissioning of your system and can offer you a fixed price hotline service. Please don't hesitate to contact us if you have any queries!